

Industrial Development Authority of Winston County, Alabama, Inc.

W&D LLC Facility



Grady Batchelor – grady@idawinston.org
P.O. Box 368, Haleyville, Alabama, 35565
Tel: 205.269.1780 Fax: 205.449.1571

W&D LLC FACILITY – Dolphin Road & Hwy 13

HALEYVILLE, ALABAMA

BUILDING FOR
SALE/LEASE/
LEASE TO OWN

GENERAL
BUILDING DATA

For Information Contact:
Grady Batchelor
(205) 269-1780
grady@idawinston.org

The Industrial Development
Authority of Winston County
11 Blake Drive, Suite 3
Double Springs, AL 35553
Tel: 205.269.1780
Fax: 205.449.1571
www.winstonadvantage.com



General Building Data

- Total Size:** 14,000 sq. ft.
- Office Area:** 4,000 sq. ft.
- Warehouse:** 10,000 ft.
- Total Acreage:** 35.5 acres
- Additional Acreage:** No
- Construction Material:**
 - Office:** Wood frame
 - Warehouse:** Metal
- A/C – Heating:** Yes
- Zoning:** Heavy Industrial
- Ceiling Height Eave:** 20 ft.
- Maximum:** 24 ft.
- Floor Thickness:** 6 inches
- Number of Bays:** 1
- Truck Docks:** 2
- Drive-In:** 2

Utilities

- Water:** City of Haleyville
- Sewer:** City of Haleyville
- Electricity:** Alabama Power (Phase 3)

Transportation

- Interstate 22:** 15 miles to access
- U.S. Hwy 278:** 10 miles to access
- AL195:** 5 miles to access
- AL 13:** 1 mile to access
- Nearest Commercial Air:** Birmingham

W&D LLC FACILITY – Dolphin Road & Hwy 13

HALEYVILLE, ALABAMA

BUILDING FOR
SALE/LEASE/
LEASE TO OWN

Aerial View



For Information Contact:
Grady Batchelor
(205) 269-1780
grady@idawinston.org

The Industrial Development
Authority of Winston County
11 Blake Drive, Suite 3
Double Springs, AL 35553
Tel: 205.269.1780
Fax: 205.449.1571
www.winstonadvantage.com

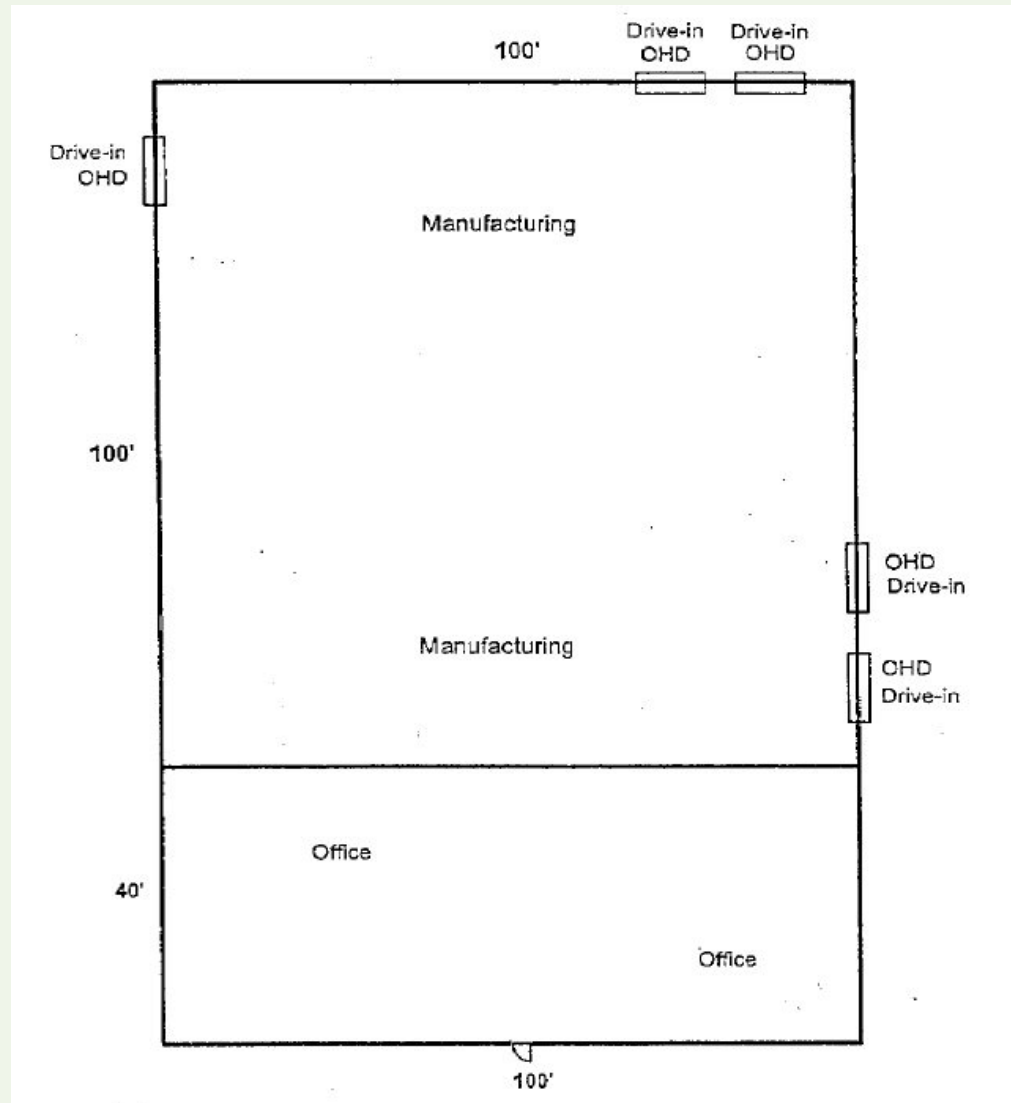
Copyright 2008, The Industrial Authority of Winston County, Alabama. We obtained this information above from sources we believe to be reliable. However, we have not verified its accuracy and make no guarantee, warranty or representation about it. It is submitted subject to the possibility of errors, omissions, change of price, rental or other conditions, prior sale, lease or financing, or withdrawal without notice. We include projections, opinions, assumptions or estimates for example only, and they may not represent current or future performance of the property. You and your tax and legal advisors should conduct your own investigation of the property and transaction.

W&D LLC FACILITY – Dolphin Road & Hwy 13

HALEYVILLE, ALABAMA

BUILDING FOR
SALE/LEASE/
LEASE TO OWN

Floor Plan



Copyright 2008, The Industrial Authority of Winston County, Alabama. We obtained this information above from sources we believe to be reliable. However, we have not verified its accuracy and make no guarantee, warranty or representation about it. It is submitted subject to the possibility of errors, omissions, change of price, rental or other conditions, prior sale, lease or financing, or withdrawal without notice. We include projections, opinions, assumptions or estimates for example only, and they may not represent current or future performance of the property. You and your tax and legal advisors should conduct your own investigation of the property and transaction.

For Information Contact:
Grady Batchelor
(205) 269-1780
grady@idawinston.org

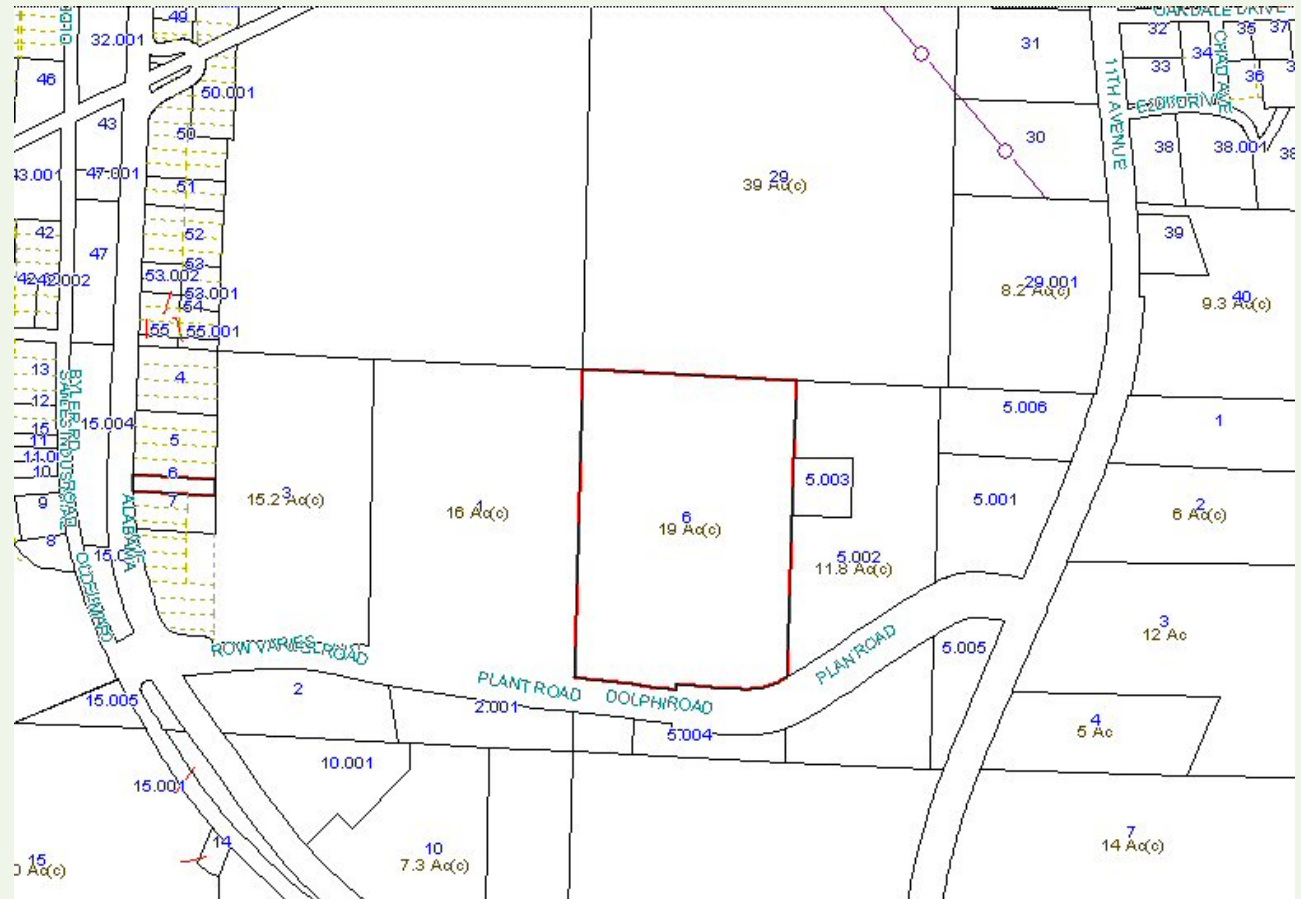
The Industrial Development
Authority of Winston County
11 Blake Drive, Suite 3
Double Springs, AL 35553
Tel: 205.269.1780
Fax: 205.449.1571
www.winstonadvantage.com

W&D LLC FACILITY – Dolphin Road & Hwy 13

HALEYVILLE, ALABAMA

BUILDING FOR
SALE/LEASE/
LEASE TO OWN

Tax Map



For Information Contact:
Grady Batchelor
(205) 269-1780
grady@idawinston.org

The Industrial Development
Authority of Winston County
11 Blake Drive, Suite 3
Double Springs, AL 35553
Tel: 205.269.1780
Fax: 205.449.1571
www.winstonadvantage.com

Copyright 2008, The Industrial Authority of Winston County, Alabama. We obtained this information above from sources we believe to be reliable. However, we have not verified its accuracy and make no guarantee, warranty or representation about it. It is submitted subject to the possibility of errors, omissions, change of price, rental or other conditions, prior sale, lease or financing, or withdrawal without notice. We include projections, opinions, assumptions or estimates for example only, and they may not represent current or future performance of the property. You and your tax and legal advisors should conduct your own investigation of the property and transaction.

W&D LLC FACILITY – Dolphin Road & Hwy 13

HALEYVILLE, ALABAMA

BUILDING FOR
SALE/LEASE/
LEASE TO OWN

Property Record
Cards

Property Record Card						Print Close
Parcel Info						
Parcel Number			Delta Pin #	Exempt	AMENTITES ROAD TOPO SEWER WATER GAS	
67-06-03-07-0-200-006.000			7705			
Subdivision						
Neighborhood		HALEYVILLE				
District	City	S-T-R	Acreage	Lot Size	Deed B/P/D	
03A	HALEYVILLE - ABATEMENT		19		0276-0000898-6/11/2008	
Legal	19 AC BEING PART NW NE SEC 7 T10 R10					

For Information Contact:
Grady Batchelor
(205) 269-1780
grady@idawinston.org

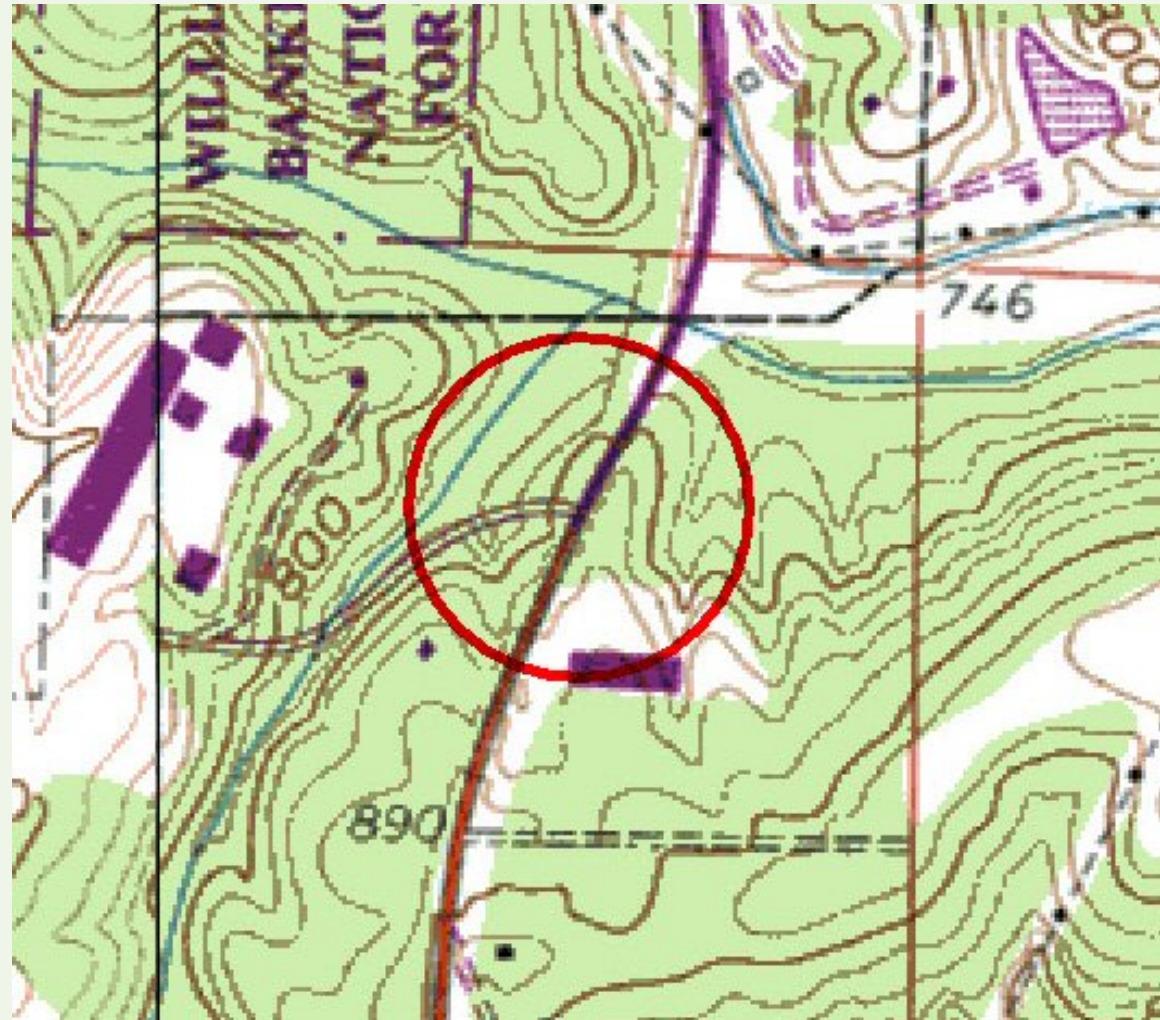
The Industrial Development
Authority of Winston County
11 Blake Drive, Suite 3
Double Springs, AL 35553
Tel: 205.269.1780
Fax: 205.449.1571
www.winstonadvantage.com

W&D LLC FACILITY – Dolphin Road & Hwy 13

HALEYVILLE, ALABAMA

BUILDING FOR
SALE/LEASE/
LEASE TO OWN

Topographic Map



Copyright 2008, The Industrial Authority of Winston County, Alabama. We obtained this information above from sources we believe to be reliable. However, we have not verified its accuracy and make no guarantee, warranty or representation about it. It is submitted subject to the possibility of errors, omissions, change of price, rental or other conditions, prior sale, lease or financing, or withdrawal without notice. We include projections, opinions, assumptions or estimates for example only, and they may not represent current or future performance of the property. You and your tax and legal advisors should conduct your own investigation of the property and transaction.

For Information Contact:
Grady Batchelor
(205) 269-1780
grady@idawinston.org

The Industrial Development
Authority of Winston County
11 Blake Drive, Suite 3
Double Springs, AL 35553
Tel: 205.269.1780
Fax: 205.449.1571
www.winstonadvantage.com