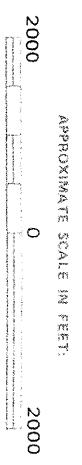
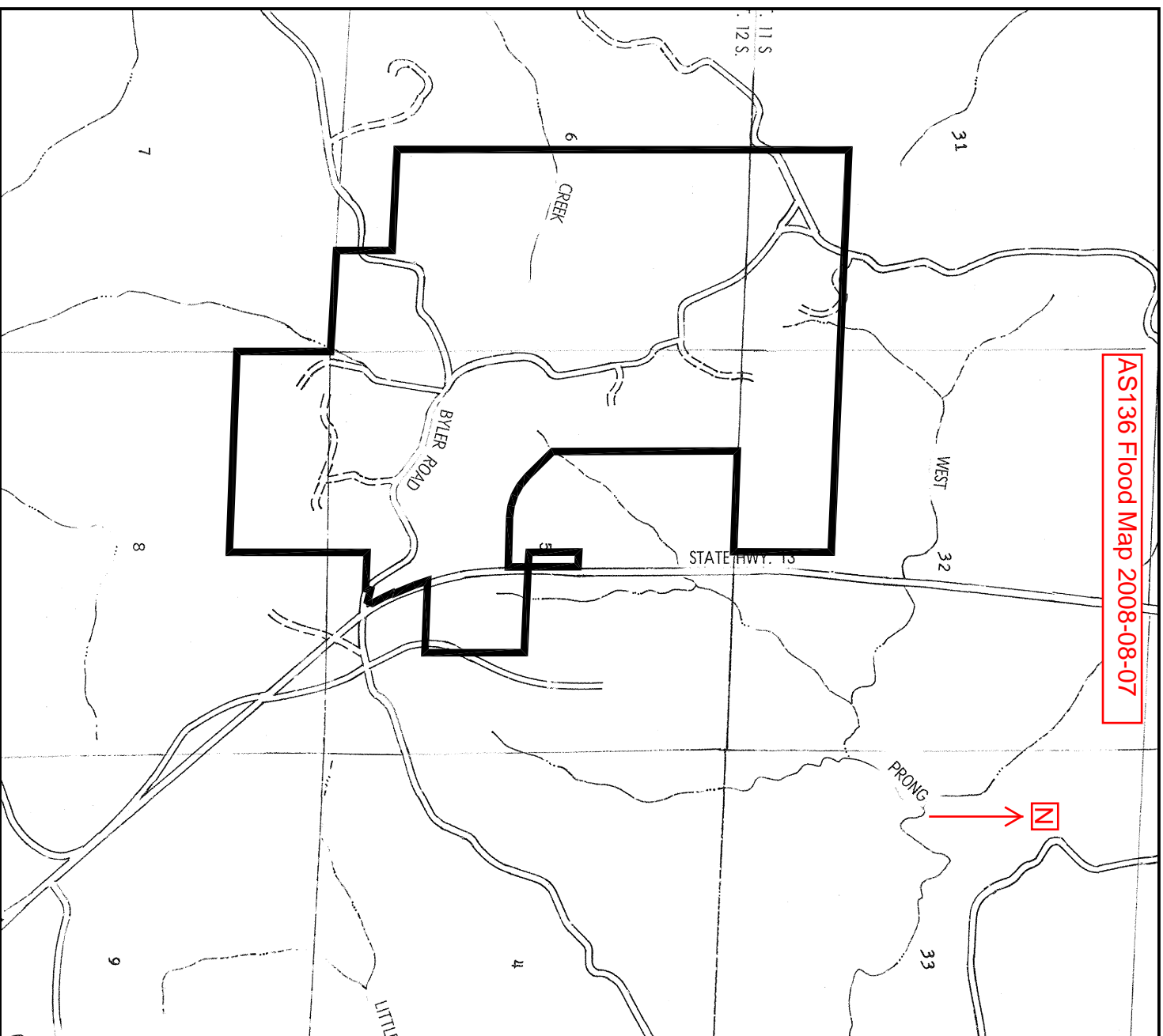


AS136 Flood Map 2008-08-07



FLOOD HAZARD BOUNDARY MAP

WINSTON COUNTY ALABAMA UNINC. AREAS

PAGE 7 OF 9 (SEE MAP INDEX FOR PAGES NOT PRINTED)

EFFECTIVE DATE: FEBRUARY 17, 1978

CONVERTED BY LETTER EFFECTIVE 9/1/91 COMMUNITY --PANEL NUMBER 010304 0007 A



U.S. DEPARTMENT OF HOUSING AND URBAN DEVELOPMENT FEDERAL INSURANCE ADMINISTRATION

This is an official copy of a portion of the above referenced flood map. It was extracted using F-MIT On-Line. This map does not reflect changes or amendments which may have been made subsequent to the date on the title block. For the latest product information about National Flood Insurance Program flood maps check the FEMA Flood Map Store at www.msc.fema.gov



GOODWYN, MILLS & CAWOOD, INC. ENGINEERING ARCHITECTURE LANDSCAPE ARCHITECTURE PLANNING

WINSTON COUNTY INDUSTRIAL PARK FLOOD HAZARD MAP